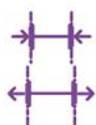


Talgo



Talgo in Shift2Rail

talgo.com



Shift2Rail Dialogue on the Future of
Rail Research & Innovation

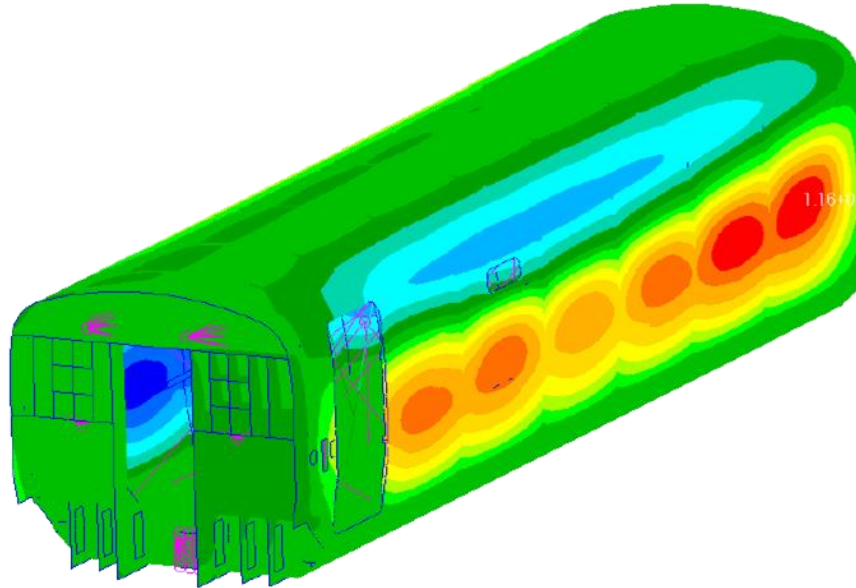
12/02/2019



Talgo projects in Shift2Rail

Carbody Structure (IP1)

- » Reduction of the carbodyshell weight by using lighter materials (by 15% - 20%)
- » First use of composite materials in primary structure for HS vehicles
- » Projects: PIVOT (+PIVOT2)
- » Talgo leadership of TD 1.3



Talgo projects in Shift2Rail

IWR Motorized Wheelset (IP1)

- » Real-scale prototype of a motor-wheel low-floor independently-rotating-wheelset assembly
- » New traction concept by using the independent wheel with a permanent magnet motor
- » Projects: PINTA, PINTA2 (+PINTA3)

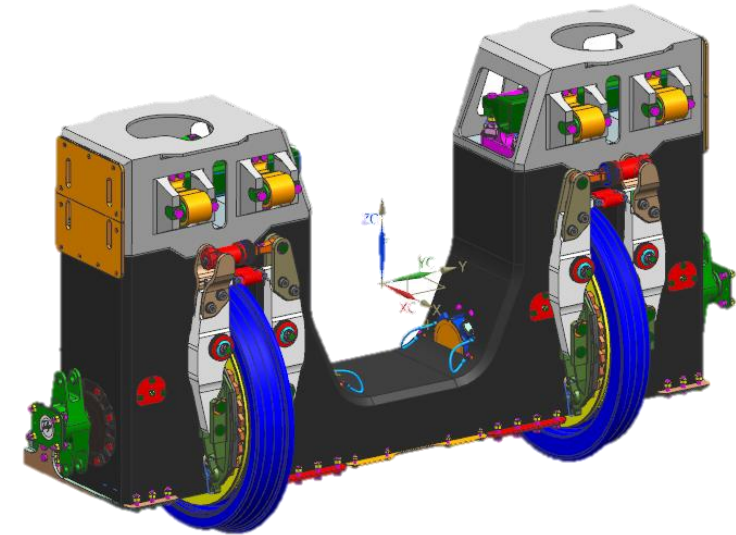
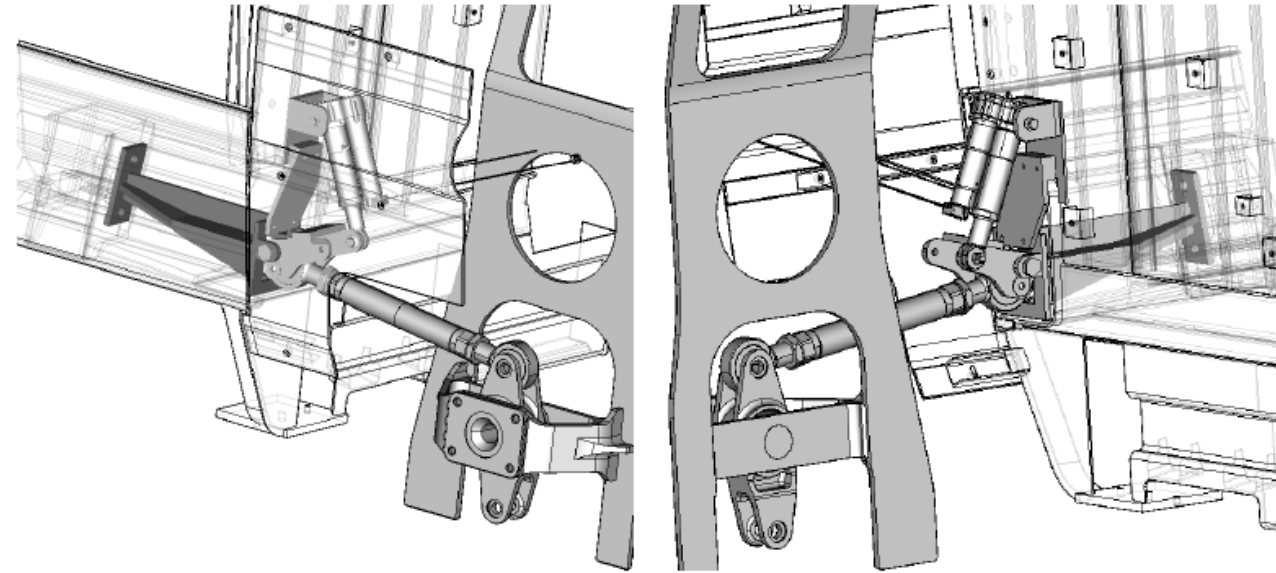


IWR: Independent Wheel Rotation

Talgo projects in Shift2Rail

Running Gear (IP1)

- » Active steering systems
- » Active suspensions
- » New materials for lightening running gear structures
- » Projects: PIVOT (+PIVOT2)



Talgo projects in Shift2Rail

N&V + Energy efficiency (CCA)

- » Train energy consumption tool
- » Prediction and mitigation tools for rolling stock noise
- » Measurement of S2R overall achievements for noise and energy efficiency
- » Projects: FINE1 (+FINE2Plus)



Thank you very much

Emilio García

Chief Innovation Officer

Paseo del tren Talgo, 2
28290 Las Matas - Madrid
Tel (+34) 916 312 717
Mov (+34) 646 016 211
@: egarcia@talgo.com
Web: www.talgo.com

