



# Shift2Rail Dialogue on the Future of Rail Research & Innovation Spanish Event

12<sup>th</sup> February 2019

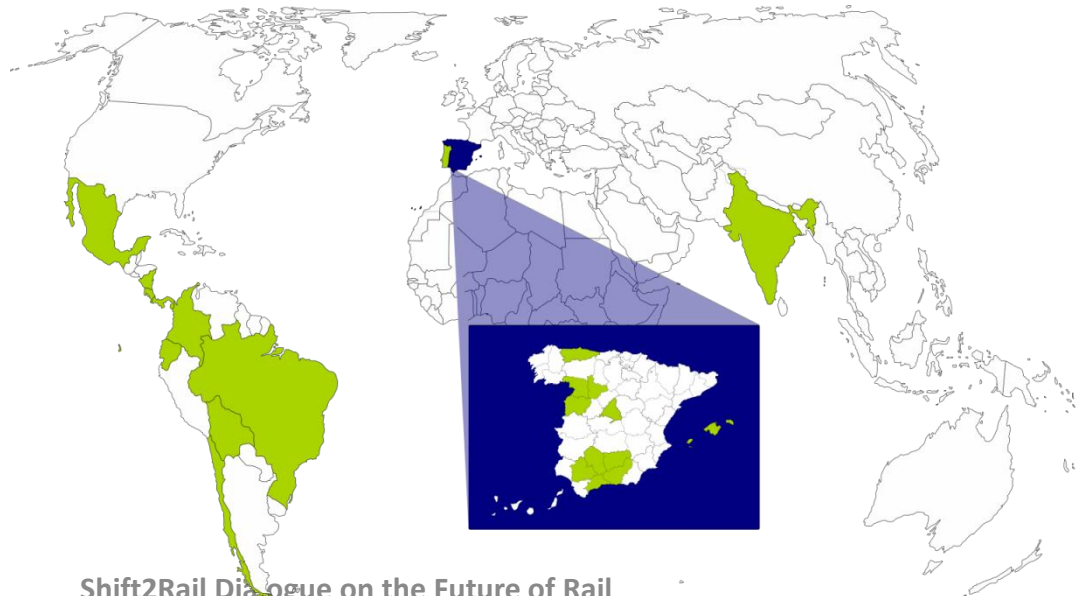
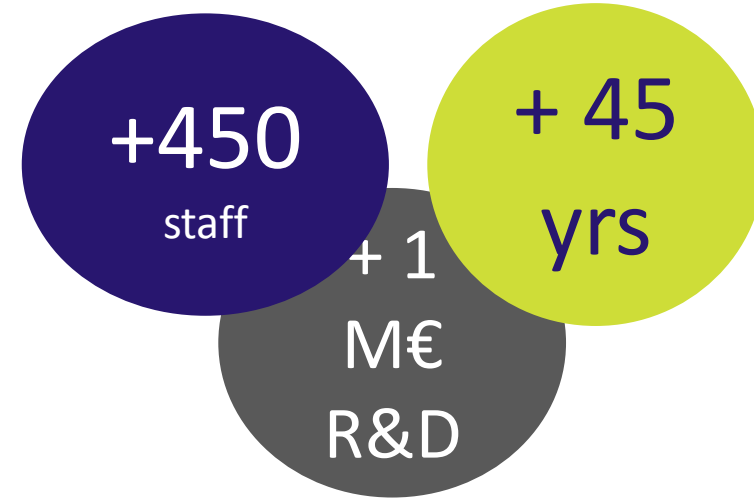


**Dr. Noemi Jiménez-Redondo**

Head of R&D division

# Basic company information

- 🔄 **Engineering** Consultancy and Quality Control company in the **field of Transport Infrastructures** and buildings
- 🔄 **Multidisciplinary** staff (engineers, architects, chemist, physics & geologist graduated, etc).
- 🔄 **10 national** offices and **5 international** offices providing **services in 12 countries**



# Our role in Shift2Rail

**S2R IP3:** Cost efficient and reliable high capacity **infrastructure**

Total members: 71

Spanish members: 11 (only us in Andalusia)

**CEMOSA** is an **AM** through **Smart DeMain Consortium**

**Smart DeMain:** : **Smart Desing** and **Maintenance** for the railways of tomorrow:

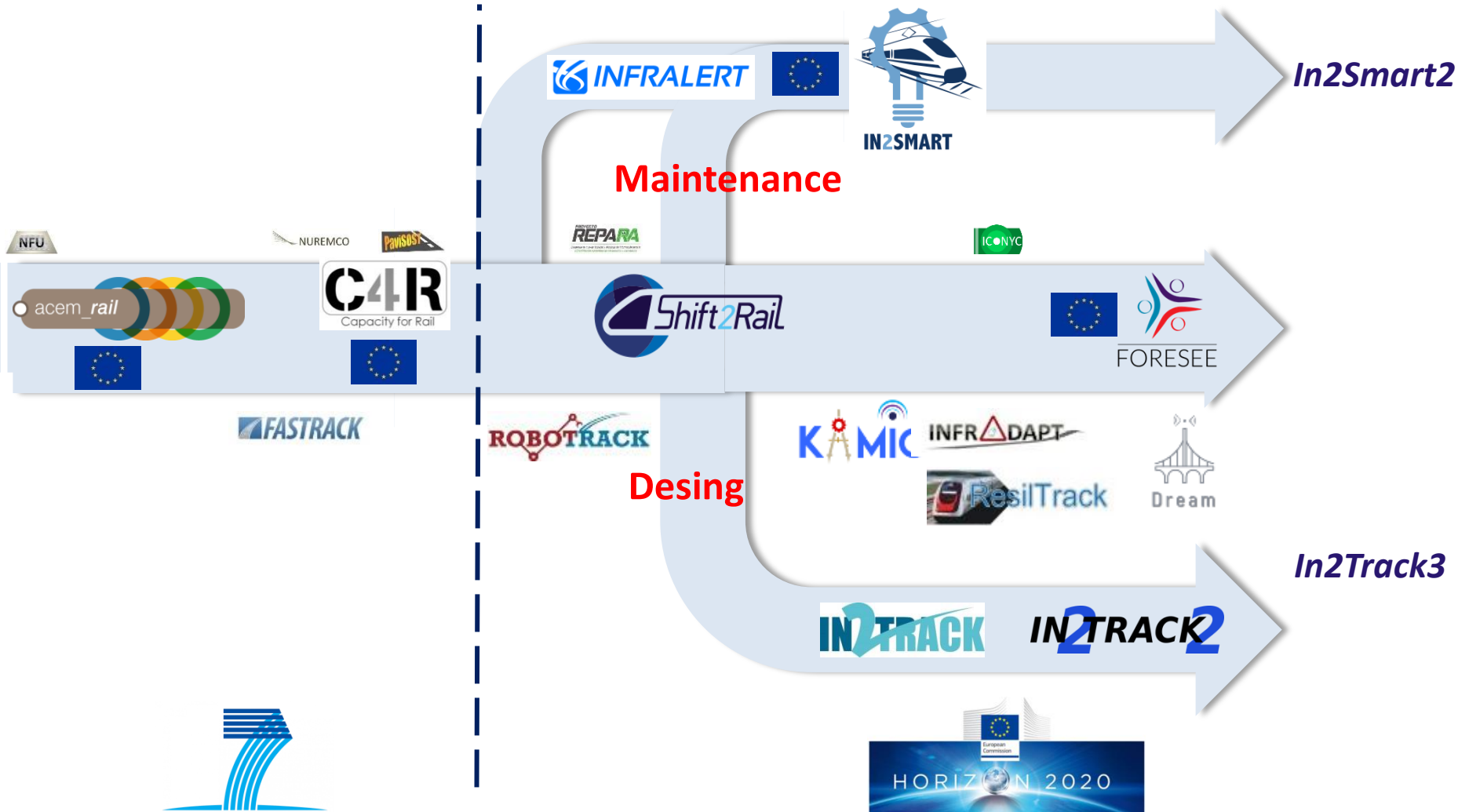
- STRUKTON Rail (Maintenance)
- ACCIONA (Design)
- **CEMOSA (Design & Maintenance)**
- DLR (Maintenance)
- Fraunhofer (Maintenance)



## CEMOSA's role

- **Design:**
  - TD3.3, TD3.5
  - Track + Tunnels and Bridges
- **Maintenance:**
  - TD3.6, TD3.8
  - Data analytics + Decision support

# Our evolution in transport infrastructures research



# Our activities in S2R projects: In2Track



Coordinator: TRAFIKVERKET

19 partners

Duration: Sep2016 – Feb2019

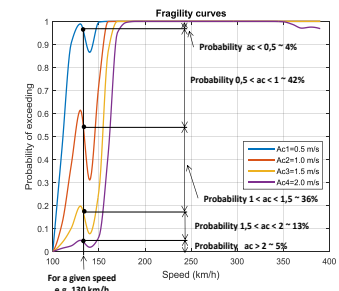
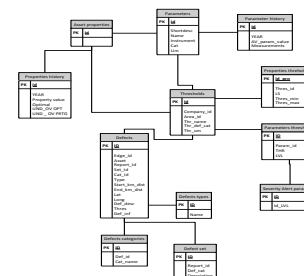
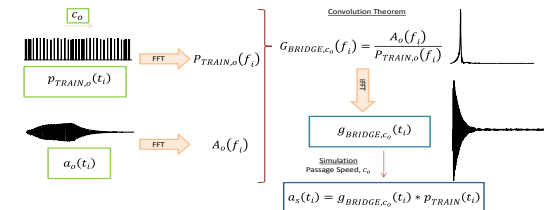
## Objective

Increase in the capacity, reliability, and reduction of life cycle costs

- Track devices
- Substructure
- Tunnels and bridges

## Results from CEMOSA

- Definition of **database** cost-effective oriented to **RAMS&LCC** analysis
- **Simulation** models for predicting the **remaining useful life in railway bridges**
- Development of **fragility curves** for **risk modelling**



## Our activities in S2R projects: In2Smart



Coordinator: ANSALDO

22 partners

Duration Sep 2016-Aug 2019

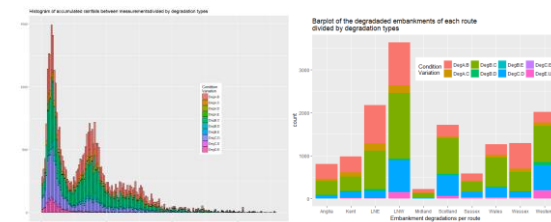
## Objective

## Development of **Intelligent Innovative maintenance systems and strategies** for railway infrastructures

- Monitoring
- Data Analytics
- Decision Support Tools

## Results from CEMOSA

- **Data analytics techniques** to support maintenance planning
- **Prescriptive models** to guide decision making and maintenance planning
- **Use Case on Earthworks (analytics + decision support)** for NR
- Generic **decision support framework**



# Our activities in S2R projects: In2Track 2



Coordinator: NETWORK RAIL

28 partners

Duration: Nov 2018 – Apr 2021

## Objective

To continue the strategic research line starting during In2Track, providing **new developments** and **tests in real environments**

- Optimisation of track devices
- Substructure
- Tunnels and bridges

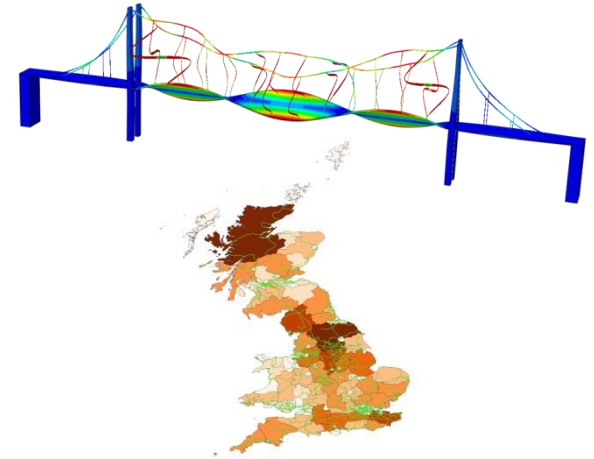
## CEMOSA's role

- Sustainable solutions for **support layer** in **slab track** solutions (3MB) → **test in Sweden**
- **BIM** Model for **maintenance in bridges**
- **Probabilistic** models for **structural analysis**
- Development of new generation of **seismic dampers** → **test in Portugal**

# Our gains due to Shift2Rail

## Technical benefits

- **Consolidation** of our **railway research strategic plan**
- Development of **new tools** in the field of **maintenance and assessment of bridges and tunnels**
- New tools in the **data analytics** and **decision support systems**
- Close **contact** with the **main Railway Infrastructure Players** in Europe



## Business benefits

- Creation of a **Brand image** in the sector of engineering consultancy at European level
- **Increase the service portfolio**
- **Raise of the competitiveness** regarding the competitors
- **Access to new markets and new customers** at European level





- We believe in Shift2Rail
- We have grown and developed with S2R
- We want to be involved in S2R 2

# Thank you for your kind attention



Dr. Noemi Jiménez-Redondo  
Head of R&D division